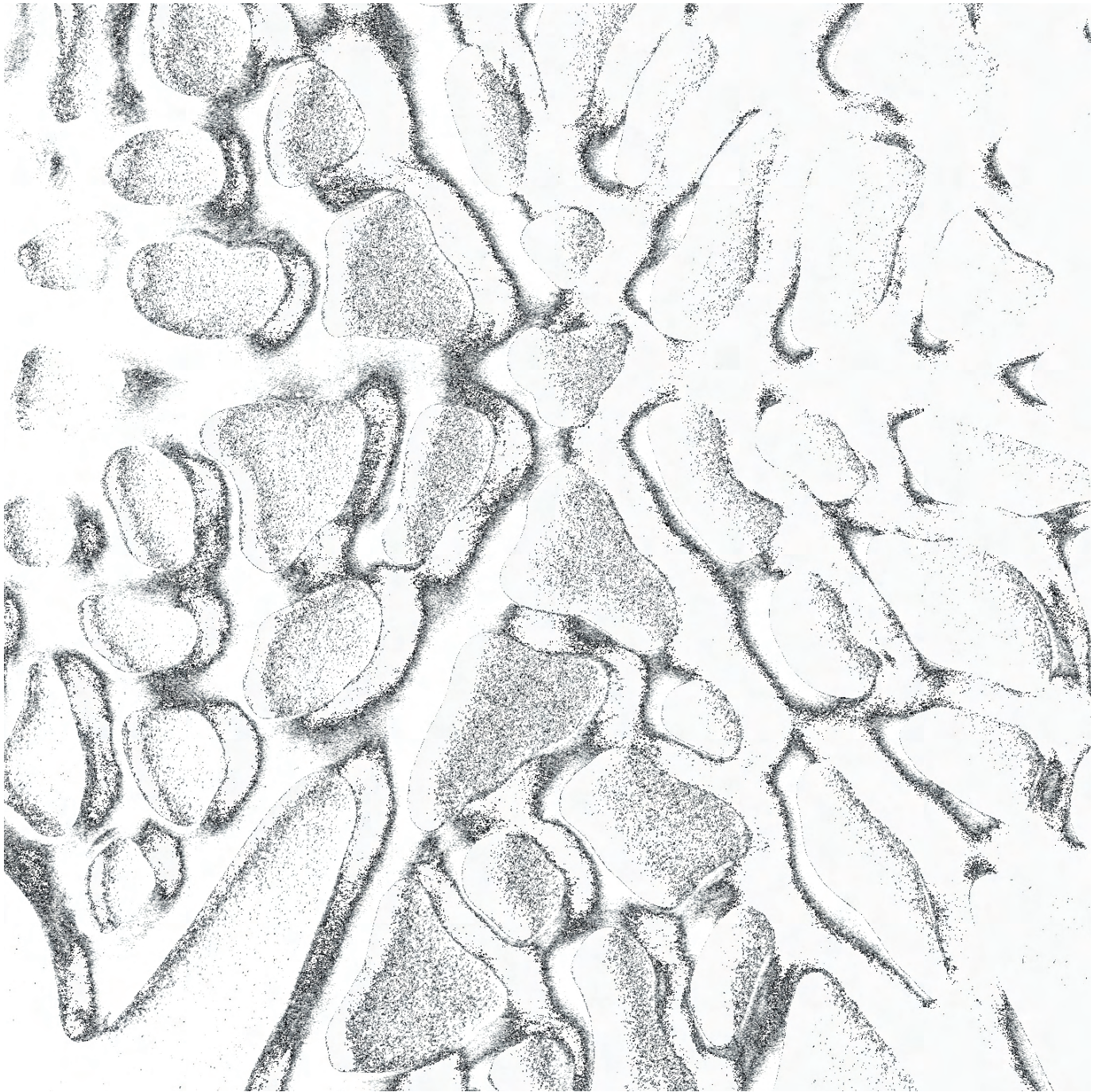


MARTIN PIERCE



May 2019

ERGO

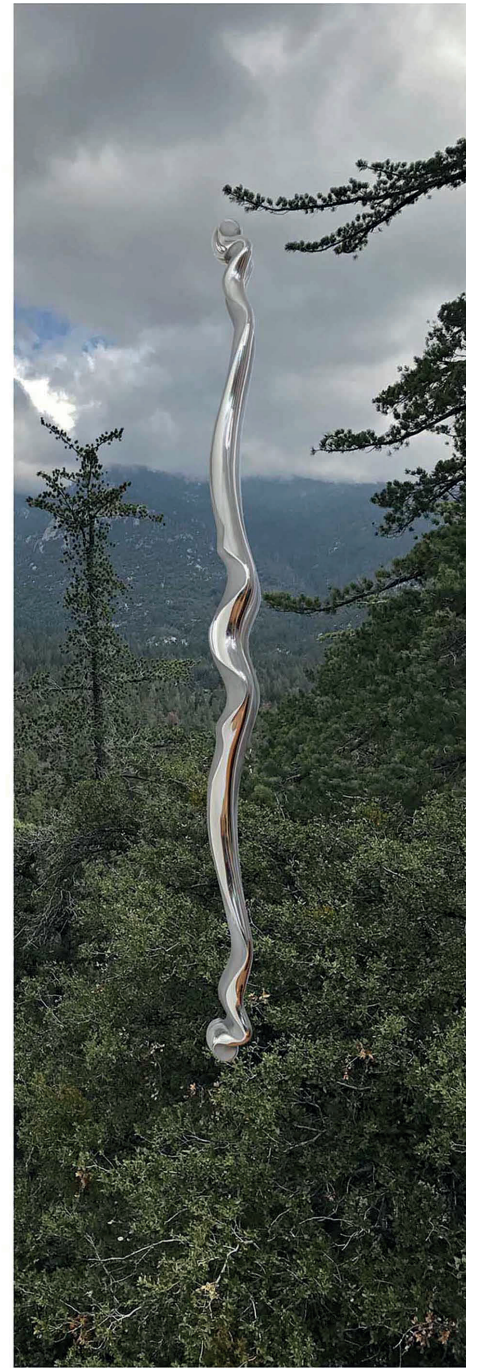


ERGO



Ergo Mega Door Pull

ERGO



Ergo Relative Scale Of Extended and Mega Door Pull

ERGO



Ergo Extended Door Pull Detail

ERGO



Ergo Heroic Door Pulls

ERGO



Ergo Single Cylinder Entry Way Lever & Lockset - Exterior

ERGO



Ergo Passage Way Lever & Back Plate

ERGO



Ergo Passage Way Knob on Rose

ERGO DOOR HARDWARE



1. Single Cylinder Entry Way Lever (left shown) & Turn Piece on 3"W x 12"H (76 x 305mm) Back Plate - Interior
2. Single Cylinder Entry Way & Lever (right shown) on 3"W x 12"H (76 x 305mm) Back Plate - Exterior
3. Passage Way Lever (left shown) on 3"W x 7"H (76 x 178mm) Back Plate
4. Passage Way Lever (left shown) - Top View
5. Passage Way Knob (left shown) on 3 1/4"Dia. (83mm) Rose

6. Passage Way Knob (right shown) on 3 1/4"Dia. (83mm) Rose
7. Single or Double Cylinder Lock with 3 1/4"Dia. (83mm) Rose
8. Single Cylinder Turn Piece on 3 1/4"Dia. (83mm) Rose
9. Single Cylinder Turn Piece Side View
10. Entry Way Multi Point Profile Cylinder Lever (left shown) on 2 1/4"W x 9 1/2"H (57 x 241mm) Back Plate - Exterior
11. Entry Way Multi Point Profile Cylinder Turn Piece Lever (right shown) on 2 1/4"W x 9 1/2"H (57 x 241mm) Back Plate - Interior

The designs shown here are the original designs of Martin Pierce and are protected by copyright© 1993-2017. These designs are part of the trade mark and trade dress of Martin Pierce and Martin Pierce Hardware. Please respect our designs. Thank you.

ERGO DOOR AND CABINET PULLS



1.a Mega Door Pull - $3 \frac{1}{4}"$ W x $4"D$ x $55"H$ (82 x 102 x 1397mm)

1.b Extended Door Pull - $2 \frac{1}{2}"$ W x $35 \frac{1}{4}"$ H (64 x 895mm)

2. 12" (305mm) cabinet pull

3. Conical Cabinet Pull - $1 \frac{1}{4}"$ W x $2"H$ (32 x 51mm)

4. Small Wave Cabinet Pull - $2"W$ x $\frac{3}{4}"H$ (51 x 19mm)

5. Large Wave Cabinet Pull - $3"W$ x $1"H$ (76 x 25mm)

6. Oval Cabinet Pull - $3"W$ x $1"H$ (76 x 25mm)

7. Round Cabinet Pull - $1"Dia.$ (25mm)

8. Heroic Door Pull (right shown) - $5 \frac{1}{2}"$ W x $18 \frac{1}{2}"$ H (140 x 470mm)

The designs shown here are the original designs of Martin Pierce and are protected by copyright© 1993-2017. These designs are part of the trade mark and trade dress of Martin Pierce and Martin Pierce Hardware. Please respect our designs. Thank you.

ENTRY WAY DOOR HARDWARE

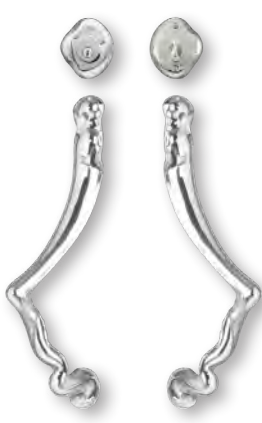

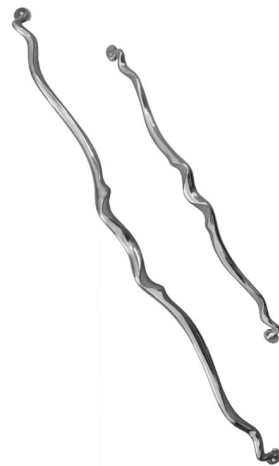
CALL FOR QUANTITY
CONTRACT PRICING

		Product Code	Retail Price (\$)
	SINGLE CYLINDER LEVER ENTRY WAY LOCK SET Exterior Side Back Plate 3"W x 1/2"D x 12"H (76 x 13 x 305mm) Left or Right Lever 6"W x 2 1/4"D x 2 1/2"H (152 x 57 x 64mm) Interior Side Back Plate 3"W x 1/2"D x 12"H (76 x 13 x 305mm) Left or Right Lever 6"W x 2 1/4"D x 2 1/2"H (152 x 57 x 64mm) Turn Piece 5/8"W x 1"D x 1 1/4"H (16 x 25 x 32mm) Locks Included Includes Keyed Cylinder but not mortise lock We recommend Accurate Mortise Lock. Please call for current price.		
	Bronze - Polished, Light Antique, Dark Antique Stainless Steel - Brushed, Polished	ELS103B ELS103S	1,311 1,632
	SINGLE CYLINDER KNOB ENTRY WAY LOCK SET Exterior Side Back Plate 3"W x 1/2"D x 12"H (76 x 13 x 305mm) Left or Right Knob 2 1/2"W x 2 1/4"D x 3"H (64 x 57 x 76mm) Interior Side Back Plate 3"W x 1/2"D x 12"H (76 x 13 x 305mm) Left or Right Knob 2 1/2"W x 2 1/4"D x 3"H (64 x 57 x 76mm) Turn Piece 5/8"W x 1"D x 1 1/4"H (16 x 25 x 32mm) Locks Included Includes Keyed Cylinder but not mortise lock We recommend Accurate Mortise Lock. Please call for current price.		
	Bronze - Polished, Light Antique, Dark Antique Stainless Steel - Brushed, Polished	EKS53B EKS53S	1,168 1,407
	MULTI POINT SINGLE PROFILE CYLINDER LEVER ENTRY WAY LOCK SET Exterior Side Back Plate 2 1/4"W x 1/2"D x 9 1/2"H (57 x 13 x 241mm) Left or Right Lever 6"W x 2 1/4"D x 2 1/2"H (152 x 57 x 64mm) Interior Side Back Plate 2 1/4"W x 1/2"D x 9 1/2"H (57 x 13 x 241mm) Left or Right Lever 6"W x 2 1/4"D x 2 1/2"H (152 x 57 x 64mm) Suggested Lock Price does not include lock. Shown with a single profile cylinder and multi point lock. Our trim is compatible with most multipoint hardware.		
	Bronze - Polished, Light Antique, Dark Antique Stainless Steel - Brushed, Polished	EMLS112B EMLS112S	1,095 1,372

Ordering information is given at the end of this document including patina color codes and the finishes of strike and face plates. When ordering please specify backset, thickness of door and whether door is left or right handed.

ENTRY WAY DOOR HARDWARE

CALL FOR QUANTITY
CONTRACT PRICING

		Product Code	Retail Price (\$)
	SINGLE CYLINDER HEROIC PULL WITH ROLLER LATCH ENTRY WAY LOCK SET Exterior Side Door Pull Left or Right 5 1/2"W x 5"D x 18 1/2"H (140 x 127 x 470mm) Cylinder Rose 3 1/4"Dia. x 1/2"D (83 x 13mm) Interior Side Door Pull Left or Right 5 1/2"W x 5"D x 18 1/2"H (140 x 127 x 470mm) Cylinder Rose 3 1/4"Dia. x 1/2"D (83 x 13mm) Turn Piece 5/8"W x 1"D x 1 1/4"H (16 x 25 x 32mm) Locks Included Mortise Roller Latch Keyed Cylinder with Deadbolt		
	Bronze - Polished, Light Antique, Dark Antique	EHR303B	4,639
	Stainless Steel - Brushed, Polished	EHR303S	4,562,
	HEROIC DOOR PULL Door Pull 5 1/2"W x 5"D x 18 1/2"H (140 x 127 x 470mm) (right shown)		
	Left: Bronze - Polished, Light Antique, Dark Antique	DR7500B	1,888
	Stainless Steel - Brushed, Polished	DR7500S	1,888
	Right: Bronze - Polished, Light Antique, Dark Antique	DR7800B	1,888
	Stainless Steel - Brushed, Polished	DR7800S	1,888
	MEGA (left) EXTENDED (right) DOOR PULLS Mega 3 1/4"W x 4"D x 55 "H (82x 102 x 1397mm) Extended Door Pull 2 1/2"W x 3"D x 35 1/4"H (64 x 76 x 895mm)		
	Bronze - Polished, Light Antique, Dark Antique	DR7171B	3,200
	Stainless Steel - Brushed, Polished	DR7171S	3,200
	Bronze - Polished, Light Antique, Dark Antique	DR456B	2,600
	Stainless Steel - Brushed, Polished	DR456S	2,600

Ordering information is given at the end of this document including patina color codes and the finishes of strike and face plates. When ordering please specify backset, thickness of door and whether door is left or right handed.

ENTRY WAY DOOR HARDWARE

CALL FOR QUANTITY
CONTRACT PRICING

		Product Code	Retail Price (\$)
	SINGLE CYLINDER DEADBOLT AND TURN PIECE ENTRY WAY SET Exterior Side Rose for Keyed Cylinder 3 1/4" Dia. x 1/2"D (83 x 13mm) Interior Side Rose for Turn Piece 3 1/4" Dia. x 1/2"D (83 x 13mm) Turn Piece 5/8"W x 1"D x 1 1/4"H (16 x 25 x 32mm) Lock Included Keyed Cylinder with Deadbolt		
	Bronze - Polished, Light Antique, Dark Antique Stainless Steel - Brushed, Polished	EDS227B EDS227S	458 544
	SINGLE CYLINDER DEADBOLT & KNOB ENTRY WAY LOCK SET Exterior Side Left or Right Knob 2 1/2"W x 2 1/4"D x 3"H (64 x 57 x 76mm) Rose for Knob 3 1/4"Dia. x 1/2"D (83 x 13mm) Rose for Keyed Cylinder 3 1/4"Dia. x 1/2"D (83 x 13mm) Interior Side Left or Right Knob 2 1/2"W x 2 1/4"D x 3"H (64 x 57 x 76mm) Rose for Knob 3 1/4"Dia. x 1/2"D (83 x 13mm) Rose for Turn Piece 3 1/4"Dia. x 1/2"D (83 x 13mm) Turn Piece 5/8"W x 1"D x 1 1/4"H (16 x 25 x 32mm) Lock Included Keyed Cylinder with Deadbolt Tubular Latch		
	Bronze - Polished, Light Antique, Dark Antique Stainless Steel - Brushed, Polished	EDKS256B EDKS256S	1,273 1,463
	SINGLE CYLINDER DEADBOLT & LEVER ENTRY WAY LOCK SET Exterior Side Back Plate 3"W x 1/2"D x 7"H (76 x 13 x 178mm) Left or Right Lever 6"W x 2 1/4"D x 2 1/2"H (152 x 57 x 64mm) Rose for Keyed Cylinder 3 1/4"Dia. x 1/2"D (83 x 13mm) Interior Side Back Plate 3"W x 1/2"D x 7"H (76 x 13 x 178mm) Left or Right Lever 6"W x 2 1/4"D x 2 1/2"H (152 x 57 x 64mm) Rose for Turn Piece 3 1/4"Dia. x 1/2"D (83 x 13mm) Turn Piece 5/8"W x 1"D x 1 1/4"H (16 x 25 x 32mm) Lock Included Keyed Cylinder with Deadbolt Tubular Latch		
	Bronze - Polished, Light Antique, Dark Antique Stainless Steel - Brushed, Polished	EDLS547B EDLS547S	1,471 1,747

Ordering information is given at the end of this document including patina color codes and the finishes of strike and face plates. When ordering please specify backset, thickness of door and whether door is left or right handed.

PRIVACY & PASSAGE WAY DOOR HARDWARE



CALL FOR QUANTITY
CONTRACT PRICING

		Product Code	Retail Price (\$)
	PRIVACY LEVER LOCK SET Exterior Side Back Plate 3"W x 1/2"D x 12"H (76 x 13 x 305mm) Left or Right Lever 6"W x 2 1/4"D x 2 1/2"H (152 x 57 x 64mm) Emergency release trim Interior Side Back Plate 3"W x 1/2"D x 12"H (76 x 13 x 305mm) Left or Right Lever 6"W x 2 1/4"D x 2 1/2"H (152 x 57 x 64mm) Turn Piece 5/8"W x 1"D x 1 1/4"H (16 x 25 x 32mm) Locks Included We recommend Accurate Privacy Mortise. Please call for current price.		
	Bronze - Polished, Light Antique, Dark Antique Stainless Steel - Brushed, Polished	PRLS116B PRLS116S	1,247 1,563
	PRIVACY KNOB LOCK SET Exterior Side Back Plate 3"W x 1/2"D x 12"H (76 x 13 x 305mm) Left or Right Knob 2 1/2"W x 2 1/4"D x 3"H (64 x 57 x 76mm) Emergency release trim Interior Side Back Plate 3"W x 1/2"D x 12"H (76 x 13 x 305mm) Left or Right Knob 2 1/2"W x 2 1/4"D x 3"H (64 x 57 x 76mm) Turn Piece 5/8"W x 1"D x 1 1/4"H (16 x 25 x 32mm) Locks Included We recommend Accurate Privacy Mortise. Please call for current price.		
	Bronze - Polished, Light Antique, Dark Antique Stainless Steel - Brushed, Polished	PRKS442B PRKS442S	1,104 1,338
	PRIVACY DEADBOLT SET Exterior Side 1 Emergency release trim Interior Side 1 Rose 3 1/4"Dia. x 1/2"D (83 x 13mm) 1 Turn Piece 5/8"W x 1"D x 1 1/4"H (16 x 25 x 32mm) Locks Included Deadbolt Emergency Release Key		
	Bronze - Polished, Light Antique, Dark Antique Stainless Steel - Brushed, Polished	PDS99B PDS99S	318 378

Ordering information is given at the end of this document including patina color codes and the finishes of strike and face plates. When ordering please specify backset, thickness of door and whether door is left or right handed.

CALL FOR QUANTITY
CONTRACT PRICING

PRIVACY & PASSAGE WAY DOOR HARDWARE

		Product Code	Retail Price (\$)
	PASSAGE WAY KNOB SET Exterior/Interior 2 Roses 3 1/4"Dia. x 1/2"D (83 x 13mm) Left & Right Knob 2 1/2"W x 2 1/4"D x 3"H (64 x 57 x 76mm) Lock Included Tubular Latch (Privacy Tubular available)		
	Bronze - Polished, Light Antique, Dark Antique Stainless Steel - Brushed, Polished	PKS332B PKS332S	815 919
	PASSAGE WAY LEVER SET Exterior/Interior 2 Back Plates 3"W x 1/2"D x 7"H (76 x 13 x 178mm) Left and Right Lever 6"W x 2 1/4"D x 2 1/2"H (152 x 57 x 64mm) Lock Included Tubular Latch (Privacy Tubular available)		
	Bronze - Polished, Light Antique, Dark Antique Stainless Steel - Brushed, Polished	PLS630B PLS630S	1,013 1,224

Ordering information is given at the end of this document including patina color codes and the finishes of strike and face plates. When ordering please specify backset, thickness of door and whether door is left or right handed.

DUMMY DOOR HARDWARE – NON-OPERATIONAL

CALL FOR QUANTITY
CONTRACT PRICING

		Product Code	Retail Price (\$)
	ENTRY WAY LEVER DUMMY 1 Back Plate 3"W x ½"D x 12"H (76 x 13 x 305mm) 1 Left or Right Lever 6"W x 2 ¼"D x 2 ½"H (152 x 57 x 64mm)		
	Left: Bronze - Polished, Light Antique, Dark Antique Stainless Steel - Brushed, Polished	DUEL750B DUEL750S	534 671
	Right: Bronze - Polished, Light Antique, Dark Antique Stainless Steel - Brushed, Polished	DUEL831B DUEL831S	534 671
	ENTRY WAY KNOB DUMMY 1 Back Plate 3"W x ½"D x 12"H (76 x 13 x 305mm) 1 Left or Right Knob 2 ½"W x 2 ¼"D x 3"H (64 x 57 x 76mm)		
	Left: Bronze - Polished, Light Antique, Dark Antique Stainless Steel - Brushed, Polished	DUEK144B DUEK144S	462 558
	Right: Bronze - Polished, Light Antique, Dark Antique Stainless Steel - Brushed, Polished	DUEK212B DUEK212S	462 558
	PASSAGE WAY LEVER DUMMY 1 Back Plate 3"W x ½"D x 7"H (76 x 13 x 178mm) 1 Left or Right Lever 6"W x 2 ¼"D x 2 ½"H (152 x 57 x 64mm)		
	Left: Bronze - Polished, Light Antique, Dark Antique Stainless Steel - Brushed, Polished	DUPL400B DUPL400S	484 588
	Right: Bronze - Polished, Light Antique, Dark Antique Stainless Steel - Brushed, Polished	DUPL432B DUPL432S	484 588

Ordering information is given at the end of this document including patina color codes and the finishes of strike and face plates. When ordering please specify backset, thickness of door and whether door is left or right handed.

CALL FOR QUANTITY
CONTRACT PRICING

DUMMY DOOR HARDWARE – NON-OPERATIONAL

		Product Code	Retail Price (\$)
	PASSAGE WAY KNOB DUMMY 1 Rose 3 ¼"Dia. x ½"D (83 x 13mm) Left or Right Knob 2 ½"W x 2 ¼"D x 3"H (64 x 57 x 76mm)		
	Left: Bronze - Polished, Light Antique, Dark Antique Stainless Steel - Brushed, Polished	DUPK266B DUPK266S	385 435
	Right: Bronze - Polished, Light Antique, Dark Antique Stainless Steel - Brushed, Polished	DUPK323B DUPK323S	385 435
	PRIVACY LEVER DUMMY 1 Back Plate 3"W x ½"D x 12"H (76 x 13 x 305mm) 1 Left or Right Lever 6"W x 2 ¼"D x 2 ½"H (152 x 57 x 64mm)		
	Left: Bronze - Polished, Light Antique, Dark Antique Stainless Steel - Brushed, Polished	DURL741B DURL741S	534 671
	Right: Bronze - Polished, Light Antique, Dark Antique Stainless Steel - Brushed, Polished	DURL800B DURL800S	534 671
	PRIVACY KNOB DUMMY 1 Back Plate 3"W x ½"D x 12"H (76 x 13 x 305mm) 1 Left or Right Knob 2 ½"W x 2 ¼"D x 3"H (64 x 57 x 76mm)		
	Left: Bronze - Polished, Light Antique, Dark Antique Stainless Steel - Brushed, Polished	DURK288B DURK288S	462 558
	Right: Bronze - Polished, Light Antique, Dark Antique Stainless Steel - Brushed, Polished	DURK310B DURK310S	462 558

Ordering information is given at the end of this document including patina color codes and the finishes of strike and face plates. When ordering please specify backset, thickness of door and whether door is left or right handed.

CABINET AND APPLIANCE PULLS

ERGO

		Product Code	Retail Price (\$)
	ERGO SMALL WAVE PULL 2"W x 1"D x ¾"H (51 x 25 x 19mm)		
	Bronze - Polished, Light Antique, Dark Antique Stainless Steel - Brushed, Polished	600B 600S	51 53
	ERGO LARGE WAVE PULL 3"W x 1 ¼"D x 1"H (76 x 32 x 25mm)		
	Bronze - Polished, Light Antique, Dark Antique Stainless Steel - Brushed, Polished	700B 700S	62 66
	ERGO EPIC WAVE PULL 6"W x 1"D x 1"H (152 x 38 x 38mm)		
	Bronze - Polished, Light Antique, Dark Antique Stainless Steel - Brushed, Polished	760B 760S	130 130
	ERGO ROUND PULL 1"Dia. x 1"D (25 x 25mm)		
	Bronze - Polished, Light Antique, Dark Antique Stainless Steel - Brushed, Polished	410B 410S	47 49
	ERGO OVAL PULL 3"W x 1"D x 1"H (76 x 25 x 25mm)		
	Bronze - Polished, Light Antique, Dark Antique Stainless Steel - Brushed, Polished	510B 510S	66 71
	ERGO CONICAL PULL 1 ¼"W x 1 ¼"D x 2"H (32 x 32 x 51mm)		
	Bronze - Polished, Light Antique, Dark Antique Stainless Steel - Brushed, Polished	590B 590S	58 62
 Not to the same scale as the pulls above	ERGO 12" PULL 1"W x 1 ¾"D x 12"H (25 x 44 x 305mm) (Can be used vertically or horizontally)		
	Bronze - Polished, Light Antique, Dark Antique Stainless Steel - Brushed, Polished	3457B 3457S	320 360

Patina color codes are shown on at end of document

FINISHES

Oil Rubbed Bronze (*Price category B*)

This is a hand rubbed oil finish which will change over time allowing each piece to develop its own unique patina.



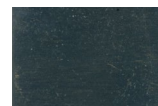
Polished Bronze
Order code PB

Strike plate



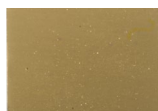
Dark Antique
Order code DA

Strike plate



Light Antique
Order code LA

Strike plate



Stainless Steel - Morphic and Ergo only (*Price category S*)

We offer 2 finishes polished-beaded and brushed. Through out the Ergo section of the catalogue you will see the polished- beaded finish. These pieces have both shinny and frosted or beaded areas, we typically frost the scoops and channels of an Ergo piece and leave the raised areas shinny and we make this artistic call.

We also have a new brushed steel finish which you will see on all of our Morphic pieces.



Polished-beaded
Order code SS

Strike plate



Brushed
Order code BS

Strike plate



HOW TO ORDER

With the many options offered by our range and the variety of possible door configurations it is important to identify precisely the pieces you wish to order. Please read the following notes in conjunction with the example order form on page 174.

Product Code

Three codes are shown against each item in the price list, ending in a letter denoting category of finish. Select the code which covers the category of finish you require as shown on the previous two pages.

e.g. PLS369B for a Willow passage way set finished in oil rubbed bronze

Finish Code

Chose a specific finish from within the category indicated by the product code. Again these are shown on the previous two pages. Note that we cannot process the order if the product and finish codes do not match.

e.g. LA for a light antique finish

Door Thickness

It is important that we know the thickness of the door as this determines the length of the spindle and screws supplied with your order. We cater for industry standards of 1 $\frac{3}{8}$ ", 1 $\frac{3}{4}$ " and 2". If your door is not one of these standards then you will need to obtain a custom quote from our representative in your area.

Door Backset

The backset is the distance between the edge of the door and the center of the lever, Knob or lock as described opposite. This dimension is critical in determining the lock or latch we include with your order.

The standard backsets offered by the lock manufacturers we include with our trim are typically 2 $\frac{3}{8}$ ", 2 $\frac{3}{4}$ " and 3". However it is possible to order locks with greater backsets of upto 5" and even 6" but in this event you will need to contact our representative in your area for a custom quote.

Door Handing and Swing

Any door can be described quite correctly as either right handed or left handed depending on which side of it one is facing. It will also swing inwards or outwards. Many of our pieces come in right and left hand versions, use interior and exterior elements and take locks with latches for either inward or outward swings. Not surprisingly, therefore, opportunities for ordering errors abound so please use the guidelines below!

Take your viewpoint from the outside of the door. Eg. outside the bathroom door or outside the entry way door.

A right hand door has the hinges on the right, a left hand door has the hinges on the left. A door that swings away from you is considered normal, one that swings towards you is called a Reverse Bevel.

If you are ordering a number of identical pieces use multiple order lines if they have different handing and/or swing descriptions.

Even if you are ordering for a door that has no lock or latch i.e. a dummy trim, we still need to know the handing of the door to determine whether we send you a right lever and back plate or left lever and back plate.

The diagram opposite illustrates the handing and swing terminology.

Pricing

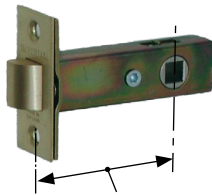
Our prices do not include freight charges, handling charges or the cost of insuring the product during transportation to you. We reserve the right to change our prices.

Where to Order

Please call us for a supplier in your area.

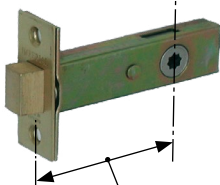
LOCK OPTIONS AND AVAILABLE BACKSETS

Tubular Latch



Available backsets:
2 3/8", 3", 4" or 5 1/8"

Tubular Deadbolt



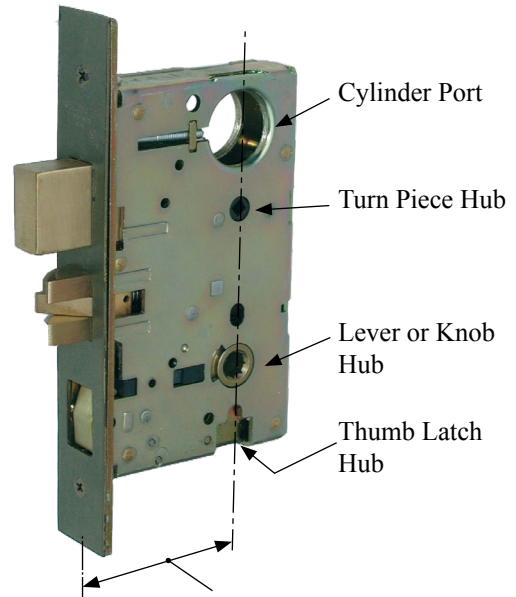
Available backsets:
2 3/8", 3", 4" or 5 1/8"

Privacy Mortise Lock and Latch



Available backsets:
2 1/2" or 2 3/4"

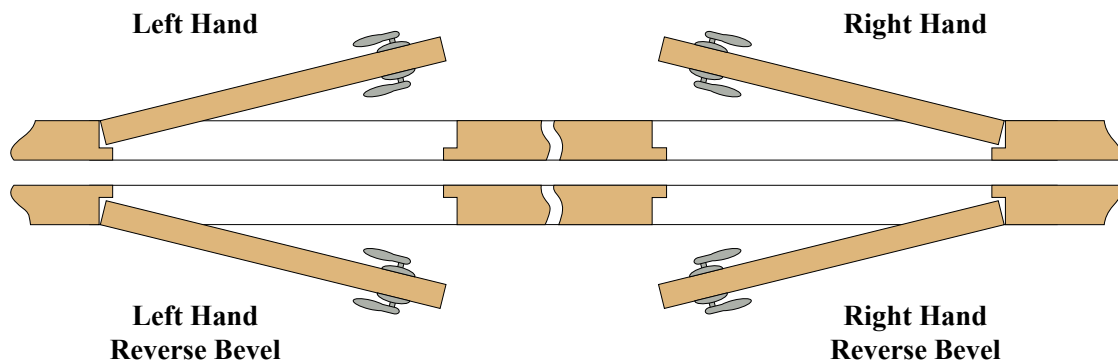
Entry Way Mortise Lock



Available backsets:
2 1/2", 2 3/4", 3 3/4", 5" or 6"

When ordering you will also need to specify thickness of door and handing.

DOOR HANDING AND SWING



OUTSIDE



VIEW FROM THIS SIDE

SAMPLE ORDER FORM

Purchase Order No.: 345

Order Date: January 2019

Bill to:

AAA Architects
231 Pine Close # D.
Los Angeles, CA 90016

Tel: 323 345 4536

Contact: **Tracy Fawn**

Ship to:

ABC Storage
Unit 5 Bare Walls St.
Del Mar, CA 90034

Tel: 310 567 4567

Contact:

Product code	Finish code	Style	Door hand	Reverse bevel	Backset - 2 3/8", 2 3/4" or 3"	Door thickness 1 3/8", 1 3/4" or 2"	Qty	Unit price (\$)	Line total (\$)
PLS369B	LA	Willow	<input checked="" type="checkbox"/> Left <input type="checkbox"/> Right	<input type="checkbox"/>	2 3/4"	2"	2	980	1,960
PLS369B	LA	Willow	<input type="checkbox"/> Left <input checked="" type="checkbox"/> Right	<input checked="" type="checkbox"/>	2 3/4"	2"	3	980	2,940
			<input type="checkbox"/> Left <input type="checkbox"/> Right	<input type="checkbox"/>					
			<input type="checkbox"/> Left <input type="checkbox"/> Right	<input type="checkbox"/>					
			<input type="checkbox"/> Left <input type="checkbox"/> Right	<input type="checkbox"/>					
			<input type="checkbox"/> Left <input type="checkbox"/> Right	<input type="checkbox"/>					
			<input type="checkbox"/> Left <input type="checkbox"/> Right	<input type="checkbox"/>					
			<input type="checkbox"/> Left <input type="checkbox"/> Right	<input type="checkbox"/>					
			<input type="checkbox"/> Left <input type="checkbox"/> Right	<input type="checkbox"/>					
			<input type="checkbox"/> Left <input type="checkbox"/> Right	<input type="checkbox"/>					
			<input type="checkbox"/> Left <input type="checkbox"/> Right	<input type="checkbox"/>					
			<input type="checkbox"/> Left <input type="checkbox"/> Right	<input type="checkbox"/>					
			<input type="checkbox"/> Left <input type="checkbox"/> Right	<input type="checkbox"/>					
			<input type="checkbox"/> Left <input type="checkbox"/> Right	<input type="checkbox"/>					
			<input type="checkbox"/> Left <input type="checkbox"/> Right	<input type="checkbox"/>					
			<input type="checkbox"/> Left <input type="checkbox"/> Right	<input type="checkbox"/>					
			<input type="checkbox"/> Left <input type="checkbox"/> Right	<input type="checkbox"/>					
			<input type="checkbox"/> Left <input type="checkbox"/> Right	<input type="checkbox"/>					
			<input type="checkbox"/> Left <input type="checkbox"/> Right	<input type="checkbox"/>					
Grand total									

When ordering scones or illuminated handles please specify your choice of white, red, blue or green LED light.

All prices are EX-WORKS Martin Pierce Hardware's location in Los Angeles and do not include California sales tax or any local state taxes that may apply.

PRODUCT CARE

Warranty for Door Hardware

Martin Pierce Hardware stands behind all of its bronze and stainless steel products with a lifetime guarantee on materials and workmanship. Internal mechanisms including locks, latches, fasteners supplied by Martin Pierce Hardware but manufactured by others are guaranteed for one year from the date of purchase. Finishes are not covered by this warranty, please refer to care instructions below for useful notes on cleaning bronze and steel

Martin Pierce Hardware will not assume liability for any labor charges regarding the removal or reinstallation of its products; nor will we cover any freight, postage, or handling expense related to the product. Damages caused by accident, misuse, abuse, or improper installation are not covered by this warranty

Care and Cleaning

Bronze and steel are both naturally weather resistant requiring little maintenance and are simple to care for. Our castings are made with 85% recycled metal and are made in the USA right here in Los Angeles. Our stainless steel products are available in 304 stainless steel which has excellent corrosion resistance and upon request, in 316 stainless steel which is ideal for coastal areas as it is more resistant to corrosion from salt.

Bronze is an alloy made from copper, manganese and silicon and it will oxidize over time as it ages. Each piece will oxidize in its own way thereby creating a unique piece. The sun, wind, air, sea air and even the oils in your hand will all play their part in the way our hardware changes over time. These effects are naturally occurring and add character and maturity to each piece.

Cleaning all surfaces with a mild soap, water, and a non-abrasive cloth will help the hardware age gracefully. We recommend against the use of any cleaning agents that contain abrasives or chemicals as these may discolor or corrode the piece.

Our brushed stainless steel castings can be cleaned with a lint free or microfiber cloth and a stainless steel cleaner that should be applied in the same direction as the grain of the brushed surface. For polished surfaces the cleaner should be applied in a circular non directional pattern.

Individuality - Truly Hand-Crafted

Our hardware is made to order and each piece is "chased" or "cleaned" by hand, as a result no two pieces are identical. This individuality makes each piece a truly unique work of art. Please read our chapter "The Process" to learn more about how we make our hardware by hand.

Finishes, hot and cold patinas

Our hardware is available in a limited number of finishes which include some cold and hot patinas. All of these finishes will change over time giving each piece it's own unique patina. There is no lacquer, cleaner or wax that can stop this natural process.



Martin Pierce Hardware Inc.
5433 W.Washington Blvd, Los Angeles, CA 90016
Tel: 323 939 5929 and 800 619 1521
Email: info@martinpierce.com www.martinpierce.com